

RBCC-E Triad status update.

Carreño V., Redondas M., Rodriguez JJ., Sierra M.

Izaña Atmospheric Observatory. Aemet. Spain

In November 2003 the WMO/GAW Regional Brewer Calibration Centre for RA-VI region (RBCC-E) was established at the Izaña Observatory of AEMET, Canary Islands (IZO). The RBCC-E Triad is linked to the Environment Canada (EC) Triad by yearly calibrations towards the travelling reference BR 017(IOS)/145(EC), a strict maintenance is performed to the Triad to ensure its high data quality. Since 2011 the Ozone Scientific Advisory group authorize the RBCC-E to transfer his own Langley Calibration during the calibration campaigns (Arosa 2012 and Huelva 2013). The agreement of the Langley calibration with the travelling transferred reference is in most of the cases $\pm 1\%$ in the period 1998-2014, and $\pm 0.5\%$ in the period 2006-2014. We present in this work an update of the Triad status which shows a long term (2005-2014) precision of 0.25%.

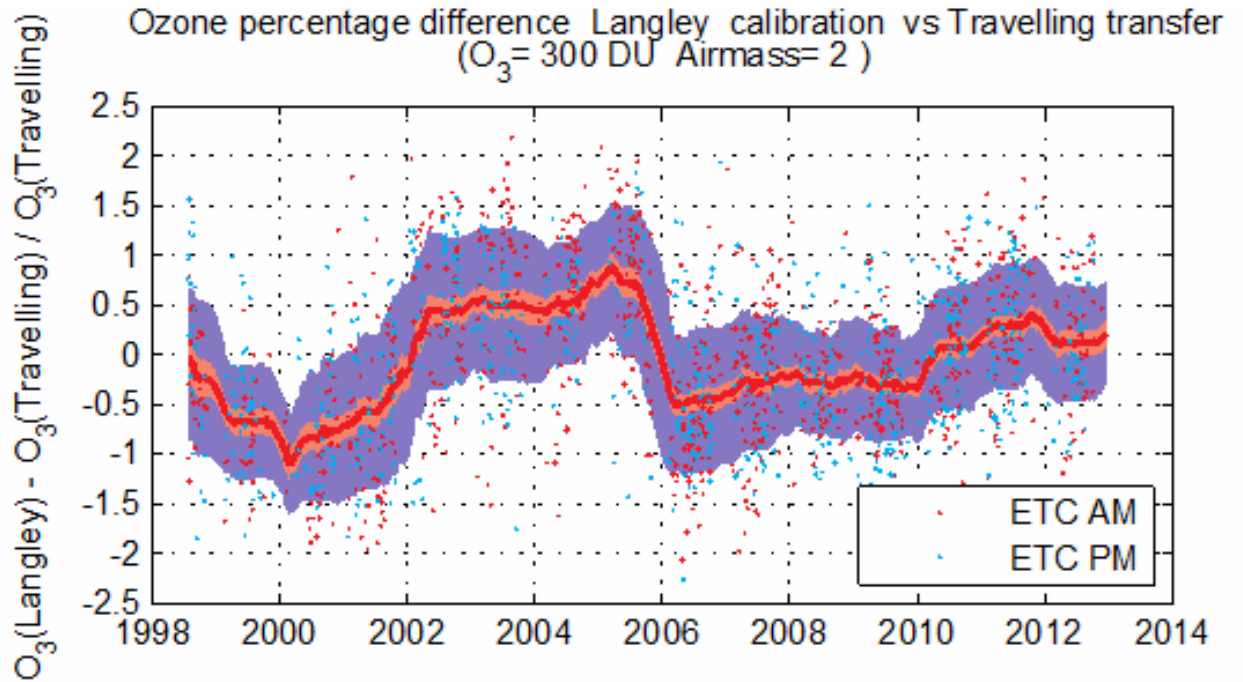


Figure 1

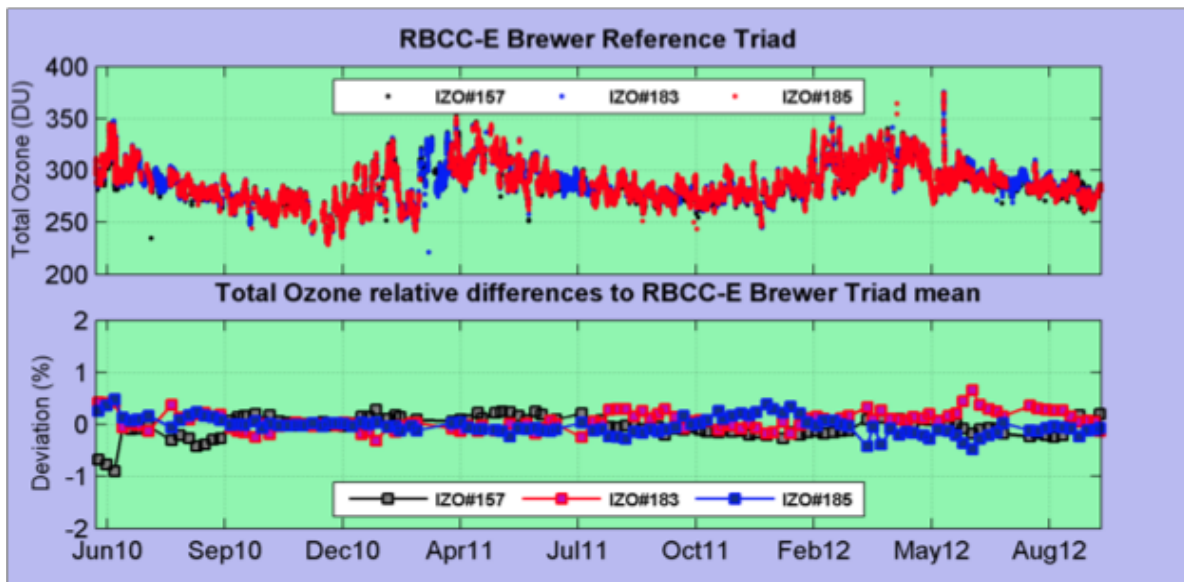


Figure 2